

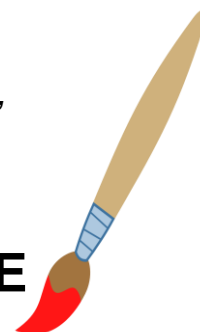
CHOLESBURY CUM ST LEONARDS HORTICULTURAL SOCIETY (Affiliated to the Royal Horticultural Society)

ANNUAL HORTICULTURAL, COOKERY, HANDICRAFT, FLOWER SHOW and CRAFT FAIR (Classes for ART and PHOTOGRAPHY, and CHILDREN'S classes)

SATURDAY 7 SEPTEMBER 2019 at 2.30 pm



*HAWRIDGE & CHOLESBURY C of E SCHOOL,
HAWRIDGE COMMON HP5 2UQ*
FREE ENTRY IN AFTERNOON



HOME MADE TEAS AND RAFFLE

Entry forms must be completed and delivered to the Show Secretary with fees by Wednesday 4 September

Class entrance fees: 20p per class for Members of Hort Soc; 30p per class for non Members and children's entries are free

ENTRY FORMS WILL BE ACCEPTED ON THE DAY BUT AT £1.00 PER CLASS

Society committee members:

President: Liz Firth
Chairman: Brian Mills
Angie Bettison
Jan Heckscher
Ellie Redding

Hon Secretary:
Diana Garner
Montana, Shire Lane
Cholesbury
Herts HP23 6NA
montana@cholesbury.net

Vice-Chair: Liz Wright
Hon. Treasurer: Charles Firth

Show Secretary:
Roseann Vince
11 Sandpit Hill Cottages
Cholesbury
Herts HP23 6NF
01494 758764
rosvince@btinternet.com



The School will be open at 8.30 am for exhibitors to set up and all exhibits must be ready for judging by 10.00 am. Vases will be provided for sweet pea and dahlia classes.

The School show rooms will be cleared for judging at 10.00 am.

PRIZES and TROPHIES will be awarded at 4.00 pm approximately, followed by the raffle
Class prizes: 1st=40p, 2nd=30p, 3rd=20p (not Children's classes) Class 39: 1st= £1,
2nd=75p, 3rd=50p)

This is a community show to encourage local residents to grow their own produce and join together in this long running event

RULES

1. New Members and new entrants must live within a 4 mile distance from the Cholesbury and Hawridge School HP5 2UQ, apart from the Children's Classes.
2. All floral and vegetable exhibits must be grown by Exhibitors in their own gardens or must have been in their possession for at least 3 months.
3. All entry forms to be given to the Secretary, Mrs Roseann Vince, 11 Sandpit Hill Cottages, Cholesbury, by the WEDNESDAY prior to the show. Entries on the day £1 per entry.
4. No exhibitor may enter more than one entry per class except for classes 65 and 70.
5. **THE JUDGE'S DECISION IS FINAL.** However, any question of doubt or dispute can be submitted to the Show Committee for a final ruling.
6. All exhibits TO BE STAGED AND READY FOR JUDGING BY 10.00 am. Doors close at 10.15 am for judging. Exhibitors to provide their own vases and dishes apart from fuchsia, sweet pea and dahlia classes.
7. **No exhibits may be removed before the end of the prize giving and raffle draw (approx. 4.00 pm).**
8. PRIZE MONEY not collected within 1 week of the show from Mrs Roseann Vince, Show Secretary, will be paid back into the Society's funds.
9. The judges have the power to withhold or modify prizes if exhibits do not warrant the prizes offered.
10. Reasonable care will be taken of all exhibits, but the Committee will not be responsible for any loss, injury or damage to exhibitors/spectators/or exhibited items.
11. Any cup cannot be won by someone who has won that cup/trophy in the last two years and is therefore not eligible to win it again in the current year.
12. **Cups to be returned to Show Secretary by the weekend prior to the show.**

SHOW CLASSES — OPEN TO ALL

ENTRANCE FEES – ALL CLASSES: Hort Soc Members: 20p per class, Non-Members: 30p per class. CHILDREN'S ENTRIES ARE FREE

PLEASE PREPARE EXHIBITS AS FAR AS POSSIBLE BEFORE ARRIVING AT THE SCHOOL TO AVOID CONGESTION

DIVISION 1 - FLOWERS

Exhibits should be arranged to display the merits of flowers or plants to their best advantage and oasis may be used. * Vases will be supplied for classes 13 to 17.

- | | | |
|-----|-------------------------------------|---|
| 1. | VASE of ROSES | Any varieties, not less than 5 blooms |
| 2. | SPECIMEN ROSE | 1 bloom |
| 3. | VASE OF ROSES | 3 blooms of one variety |
| 4. | VASE OF ANNUALS | 1 species only eg Sweet peas |
| 5. | VASE OF MIXED ANNUALS | More than one species raised from seed during the preceding 12 months eg Sweet peas+asters+cosmos |
| 6. | VASE OF HERBACEOUS PERENNIALS | 1 variety only eg Phlox |
| 7. | VASE OF MIXED HERBACEOUS PERENNIALS | Any kinds/varieties eg Phlox+dahlias+delphiniums+crocsmia |
| 8. | VASE OF MIXED SALVIAS | 5 blooms of any varieties |
| 9. | VASE OF COSMOS | 1 vase, any varieties |
| 10. | FUCHSIA BLOOMS, with short stems | 5 blooms of 1 variety - staging will be provided |
| 11. | VASE OF PENSTEMON | 5 blooms of 1 variety |
| 12. | VASE OF SHADES OF ONE COLOUR | 5 blooms or stems of any kind in shades of 1 colour |
| 13. | SWEET PEAS | 6 stems, any varieties* |
| 14. | DAHLIAS—DECORATIVE OR BALL | 3 blooms of any one variety, any size* |
| 15. | DAHLIAS—CACTUS/SEMI-CACTUS | 3 blooms any size* |
| 16. | DAHLIAS—POMPON | 3 blooms (not more than 2" (52 mm))* |
| 17. | DAHLIAS—ANY TYPE | 3 blooms of any varieties/any size* |
| 18. | CACTUS or SUCCULENT | Any variety |
| 19. | POT PLANT (FOLIAGE) | Any kind |
| 20. | POT PLANT IN BLOOM | Excluding Pelargonium or Streptocarpus |
| 21. | PELARGONIUM in pot | Any variety |
| 22. | A STREPTOCARPUS in pot | Any variety |

DIVISION 2—VEGETABLES AND FRUIT

If known, write name of fruit/vegetable exhibited on cards provided at the show

- | | | |
|-----|---|---|
| 24. | TOMATOES | 1 dish of 5 (each with calyx) |
| 25. | TOMATOES—CHERRY | 1 dish of 10 (each with calyx) |
| 26. | POTATOES | 1 dish of 5 (one variety, WHITE) |
| 27. | POTATOES | 1 dish of 5 (one variety, any other colour) |
| 28. | RUNNER BEANS | 1 dish of 5 with stalks |
| 29. | LONGEST RUNNER BEAN | With stalk |
| 30. | FRENCH BEANS | 1 dish of 5 with stalks (any variety) |
| 31. | ONIONS | 1 dish of 5—may be shown on sand |
| 32. | UGLIEST VEGETABLE | |
| 33. | CARROTS | 1 dish of 5 (foliage trimmed to approx 75 mm) |
| 34. | BEETROOTS | 1 dish of 3 (foliage trimmed to approx 75 mm) |
| 35. | MARROWS | 1 pair (optimum size 15" (38 cm)) |
| 36. | COURGETTES | 3 of the same colour |
| 37. | ANY OTHER VEGETABLE not listed in the schedule | Minimum number to be shown, 2 of a kind (Except peas/beans—5 pods required) |
| 38. | CHILLI PEPPERS | 1 dish of 6 any colour |
| 39. | A COLLECTION OF ANY VEGETABLES | Not less than 2 each of 4 kinds of vegetables |
| 40. | APPLES | Dessert, 1 dish of 5—unpolished |
| 41. | APPLES | Cooking, 1 dish of 5—unpolished |
| 42. | FRUIT | 1 dish of any kind NOT apples (not less than 5 with stalks) NB plums to be shown unpolished |
| 43. | COLLECTION OF DIFFERENT CULINARY HERBS (<i>in live form without flowers, not rooted, each plant to be labelled</i>) | 6 varieties to be displayed individually in a container |
| 44. | MIXED FRUIT AND/OR VEGETABLES | 6 fruit or veg grown in your garden or allotment |

The RHS has produced "The Horticultural Show Handbook" which is the official guide to organising, judging and competing in a show. It has useful information on how to display flowers and vegetables etc and what criteria the judges are looking for. Copies can be easily purchased. The Show Secretary has a copy so any queries please check with her.

DIVISION 3 - FLORAL ARRANGEMENTS

(NOTE: RULE 2 does not apply to this division.) OASIS MAY BE USED FOR DISPLAYS

Please check sizes!

45. AN ARRANGEMENT OF FIVE FLOWERS WITH OR WITHOUT FOLIAGE OF YOUR CHOICE — not more than 18" (45 cm) overall.
46. AN ARRANGEMENT IN A TEACUP AND SAUCER — not more than 9" (23 cm) overall.
47. AN ARRANGEMENT OF FLOWERS IN VARIOUS SHADES OF ONE COLOUR, WITH FOLIAGE— not more than 18" (45 cm) overall.
48. A JUG OF FLOWERS FOR THE KITCHEN TABLE—not more than 18" (45 cm) overall.
49. AN ARRANGEMENT INCLUDING WOOD – CONSTRUCTED OR FOUND — not more than 24" (61 cm) overall.
50. AN ARRANGEMENT IN AN UNUSUAL CONTAINER — not more than 18" (45 cm) overall.
51. AN ARRANGEMENT OF FOLIAGE — not more than 24" (61 cm) overall.

DIVISION 4 - CHILDREN'S CLASSES – No entrance fees

PUT NAME and AGE ON ENTRY (age will be taken into account). Only enter classes in one age group.

Classes for children under 5 years on date of show.

- 53. A PAINTED FLOWER POT
- 54. DECORATE A BUTTERFLY ON A PROVIDED SHAPE

Classes for children aged 5-7 years on date of show

- 55. A PLAY DOUGH MODEL OF A PLATE OF FOOD ON A PAPER PLATE
- 56. 3D WOODLAND SCENE IN A SHOE BOX

Classes for children aged 8-9 years on date of show

- 57. A JAR OF PAPER FLOWERS
- 58. MAKE AND DECORATE A PAPER WINDMILL

Classes for children aged 10 years plus on date of show

- 59. A POP-UP GREETINGS CARD
- 60. A "STAINED GLASS" WINDOW IN ANY MEDIUM

DIVISION 5 - ARTS & CRAFTS, PHOTOGRAPHY & PAINTING

Open to all ages

CRAFT: CLASSES 61–68 (inclusive). *All entries to be made by yourself and NOT TO HAVE BEEN PREVIOUSLY SHOWN IN THIS SHOW*

- 61. CARRY ON RE-CYCLING – make something from predominantly recycled/pre-loved materials (e.g. wood, metal, plastic, old clothing, left over wool, cardboard).
- 62. PAPER CRAFT an item made from, or decorated with, paper. e.g. quilling, decoupage, paper sculpture, a mask, mobile, or Christmas decoration etc.
- 63. A USEFUL ITEM FOR THE HOME e.g. Cushion, lampshade, cover for a tissue box or toilet roll, tea cosy, chair, basket etc.
- 64. A DECORATIVE WREATH (maximum overall diameter 40cms /16ins.) OR GARLAND (max 1m. /39ins. length) made from anything *except fresh plant material*.
- 65. ANY ITEM ON A FLOWER THEME (hard or soft craft) could be fabric, wood, metal or ceramic model of any flower, OR, a picture (not a stand-alone painting or photograph but could include elements of these), OR, any item decorated with a pattern based on a flower/s. These can be: stitched, knitted, embroidered or embellished. These are just a few suggestions. You may enter two items in class 65.
- 66. A BOOK COVER any craft – Decorate the cover of a book, or make a removable cover. e.g. recipe or cookery book, garden notes or journal.
- 67. ANY OTHER SOFT CRAFT - e.g. hand/machine embroidery, knitting, soft toy, etc.
- 68. ANY OTHER HARD CRAFT – e.g. pottery, woodwork, metal work, jewellery etc.

PHOTOGRAPHY: CLASSES 69–74 (inclusive). *Photographs must be taken by the entrant, and not previously displayed at this show. The Society will not accept responsibility in the case of dispute over ownership. Photos to be mounted on card — finished display no larger than A4. Photos MUST be handed to Show Steward for display—THE JUDGE'S DECISION IS FINAL*

- 69. PHOTOGRAPH OF A FLOWER IN CLOSE UP.
- 70. PHOTOGRAPH OF AN EXPANSE OF FLOWERS. e.g. a garden or wild flower meadow. Entry of up to 2 images is permitted in this class.
- 71. PHOTOGRAPH OF A BEAUTIFUL SKY, e.g. clouds, sunset/sunrise approaching storm, night
- 72. PHOTOGRAPH OF A BRIDGE.
- 73. YOUR FAVOURITE PHOTO. Two photographs may be entered.
- 74. PHOTOGRAPH OF AN ASPECT OF THE HILLTOP VILLAGES' COMMEMORATIONS OF THE END OF WORLD WAR 1 TAKEN ON 11 NOVEMBER 2018.

ART: CLASSES 75-78 (inclusive). *Original painting/picture, designed and executed by the entrant. Please state the medium used for exhibit on entry card and present pictures with facility to hang for display*

- 75. A PAINTING in Oils or Acrylic
- 76. A PICTURE in any other medium (excluding photography or craft).
- 77. A PICTURE OF A FLOWER OR FLOWERS - in any medium excluding photography or craft.
- 78. AN ABSTRACT PICTURE any medium excluding photography or craft. No larger than A2 42X59.4 cms

DIVISION 6 - DOMESTIC CLASSES

- | | |
|--|---|
| 80. JAM | 1 jar of any kind, EXCEPT raspberry |
| 81. JAM | 1 jar, raspberry |
| 82. MARMALADE | 1 jar, any kind |
| 83. LEMON CURD | 1 pot |
| 84. JELLY | 1 jar, any kind |
| 85. VICTORIA SANDWICH (3 eggs) | Not more than 8" (20 cm). Filling raspberry jam |
| 86. FRUIT CAKE | Own recipe |
| 87. HOME PRODUCED HONEY | 1 jar |
| 88. CHICKEN EGGS | 6 - any colour |
| 89. FRUIT SCONES | 6 - own recipe - any size |
| 90. BROWNIES | 6 - own recipe - any size |
| 91. A CHOCOLATE CAKE | Using Connie's Recipe as printed on page 6 |
| 92. A BAKEWELL TART | Own recipe – not larger than 9" (23 cm) |
| 93. AN APPLE CAKE | Own recipe |
| 94. LOAF OF SPECIALITY BREAD | e.g. olive, nut, etc - hand or machine made |
| 95. LOAF OF BREAD white or brown | Machine made |
| 96. JAR OF CHUTNEY or SAVOURY PRESERVE | |
| 97. FUDGE | 6 - own recipe |
| 98. MAKE AND DECORATE A SWISS ROLL | Own recipe |

CONNIE'S RECIPE (CLASS 91)

- | | |
|--|--|
| 6 oz softened butter (NOT margarine/fat) | ¼ level tsp bicarbonate of soda |
| 6 oz caster sugar | ¼ pint + 2 tbsps of milk |
| 6 oz golden syrup | 2 standard eggs |
| 6 oz of plain flour | |
| 2 oz ground almonds | (6 oz=170 g; 2 oz=56 g; ¼ pint=142 ml) |
| 7 level tbsps cocoa | |

Mix all ingredients together until smooth. Place in 8" (20 cm) lined cake tin. Bake for 1½ hours to 2 hours at mark 2 (300°F/150°C). Cake should come away from the side of the tin. Cake to be iced

AWARDS

THE RHS BANKSIAN MEDAL is awarded to the person winning the most prize money in the Horticultural classes

THE BEST IN SHOW CHALLENGE CUP is awarded to the Best Exhibit in Division 1

THE FIRTH PRIZE is awarded to the Best Exhibit in Division 2

THE TERESA MATTHEWS MEMORIAL CUP is awarded to the Best Exhibit in Division 5, Classes 61–68

THE MAUREEN NEWALL AWARD is awarded to the Best Exhibit in Division 5, classes 69-74

THE JOHN HORN ALLOTMENT TROPHY is awarded for the best allotment at Buckland Common (Judged prior to Show). The same allotment holder may not hold the trophy for consecutive years.

THE SILVER CHALLENGE BOWL is awarded to the Exhibitor winning most prize money in

Division 1

THE SOCIETY'S OPEN CHALLENGE CUP is awarded to the Exhibitor winning the most prize money in Divisions 1 and 2

THE TOMLIN CUP is awarded to the Exhibitor winning the most prize money in Dahlia classes 14,15,16,17

THE BOWDEN CUP is awarded to the Exhibitor winning the most prize money in Division 2

THE STEPHENS AWARD is awarded for the most prize money won by a VILLAGER in the flowers, fruit and vegetable divisions

THE PHYLLIS O'CONNOR BOWL is awarded to the Exhibitor winning the most prize money in Division 3

THE HODGSON CHILDREN'S CUP is awarded to the Exhibitor winning the most points in Division 4

THE O'BRIEN CUP is awarded to the Exhibitor winning the most prize money in Division 5, Classes 61–68

THE BASIL NEWALL TROPHY is awarded to the winner of the most prize money in Division 5, Classes 69–74

THE LADIES CUP is awarded to the Exhibitor winning the most prize money in Division 6

THE CONNIE BROWN AWARD is awarded to the winner of Class 91

ALL AWARDS TO BE HELD FOR ONE YEAR BY THE WINNERS

NB. All AWARDS please to be returned to Roseann Vince, 11 Sandpit Hill Cottages, Cholesbury (or other Committee Member) the weekend before the Show. Thank you

DEFINITIONS: As laid down by the Royal Horticultural Society

ANNUAL	A plant that grows from seed, flowers and dies in a year eg Cosmos, lobelia
A BLOOM	One open flower eg of a tulip
BOWL	A vessel for displaying cut flowers in water or for growing bulbous plants and having a diameter at its mouth at least equal to, but usually greater than its height
DISH	A specified number or quantity of a fruit /vegetable constituting one item which may be displayed on a table or on a stand or on a receptacle of any material and of any shape. Unless permitted in the schedule, a dish may consist of one variety only
FOLIAGE	The leaves of any plant, or stems bearing only leaves
FRUIT	In classes for floral arrangement 'fruits' means seed pods, berries and ornamental gourds
HERBACEOUS PERENNIAL	A plant with a non-woody stem that dies down to the ground completely each winter, eg delphinium, or retains its basal foliage eg bergenia, but has a rootstock (including all bulbs, corms, rhizomes and tubers) that remains alive for several years.
KIND	A term which is used in the classification of plants, flowers, fruits and vegetables for show purposes, e.g. delphiniums, roses and phlox are 'kinds' of flowers; apples, pears and plums are 'kinds' of fruit. Peas, beans and onions are 'kinds' of vegetables
SPECIES	A group of closely related plants of one genus having the same specific name eg <i>Lilium candidum</i> and <i>L. henryi</i> are two species of <i>Lilium</i> .
SPIKE	A spike bears either stalked or stalk less flowers, as in sweet peas, gladioli & foxgloves
SUCCULENT	A plant with very fleshy leaves or stems eg species of <i>Crassula</i> , <i>Sedum</i> , <i>Sempervivum</i>
VARIETY	Used for all variations within a 'kind', e.g. Peace & Super Star are varieties of roses
VASES	A vessel for displaying cut flowers in water and having a greater height than the diameter of the mouth

(Any queries about quantities/interpretation of classes or how to display your entries please contact the Show Secretary, Ros Vince on 01494 758764)

ENTRY FORM

Please enter Class Number in each Division entered. Use a separate entry sheet for each Exhibitor
ENTRIES CLOSE on the Wednesday prior to the show and should be given to Roseann Vince,
11 Sandpit Hill Cottages, Cholesbury, Herts HP23 6NF

ENTRY FEES: Members 20p/class, Non-Members 30p/class. Children's entries free

ENTRY FEES

DIVISION 1

DIVISION 2

DIVISION 3

DIVISION 4FREE

DIVISION 5

DIVISION 6

NAME: AGE (Children's classes only).....

ADDRESS:

..... TEL NO:

E-MAIL..... TOTAL ENTRIES.....

SUBSCRIPTION FORM ATTACHED



.....✂

ENTRY FORM

Please enter Class Number in each Division entered. Use a separate entry sheet for each Exhibitor
ENTRIES CLOSE on the Wednesday prior to the show and should be given to Roseann Vince,
11 Sandpit Hill Cottages, Cholesbury, Herts HP23 6NF

ENTRY FEES: Members 20p/class, Non-Members 30p/class. Children's entries free

ENTRY FEES

DIVISION 1

DIVISION 2

DIVISION 3

DIVISION 4FREE

DIVISION 5

DIVISION 6

NAME: AGE (Children's classes only).....

ADDRESS:

..... TEL NO:

E-MAIL..... TOTAL ENTRIES.....

SUBSCRIPTION FORM ATTACHED

CHOLESBURY CUM ST LEONARDS HORTICULTURAL SOCIETY

NEW MEMBER and RENEWAL FORM

£2.00 per person per annum, renewable every September (1 October to 30 September).

NAME:

ADDRESS :

.....

POSTCODE TEL NO

E-MAIL:
.....

How could the Show be improved?

PLEASE RETURN TO Diana Garner, Montana, Shire Lane, Cholesbury HP23 6NA, or include with your entry to Roseann, or via email to montana@cholesbury.net, **OR BRING TO SHOW**